

SUPPLEMENTAL FIGURES

Nguyen,D.V. and Rocke,D.M. (2002) Partial least squares proportional hazard regression for application to DNA microarray survival data. *Bioinformatics*.

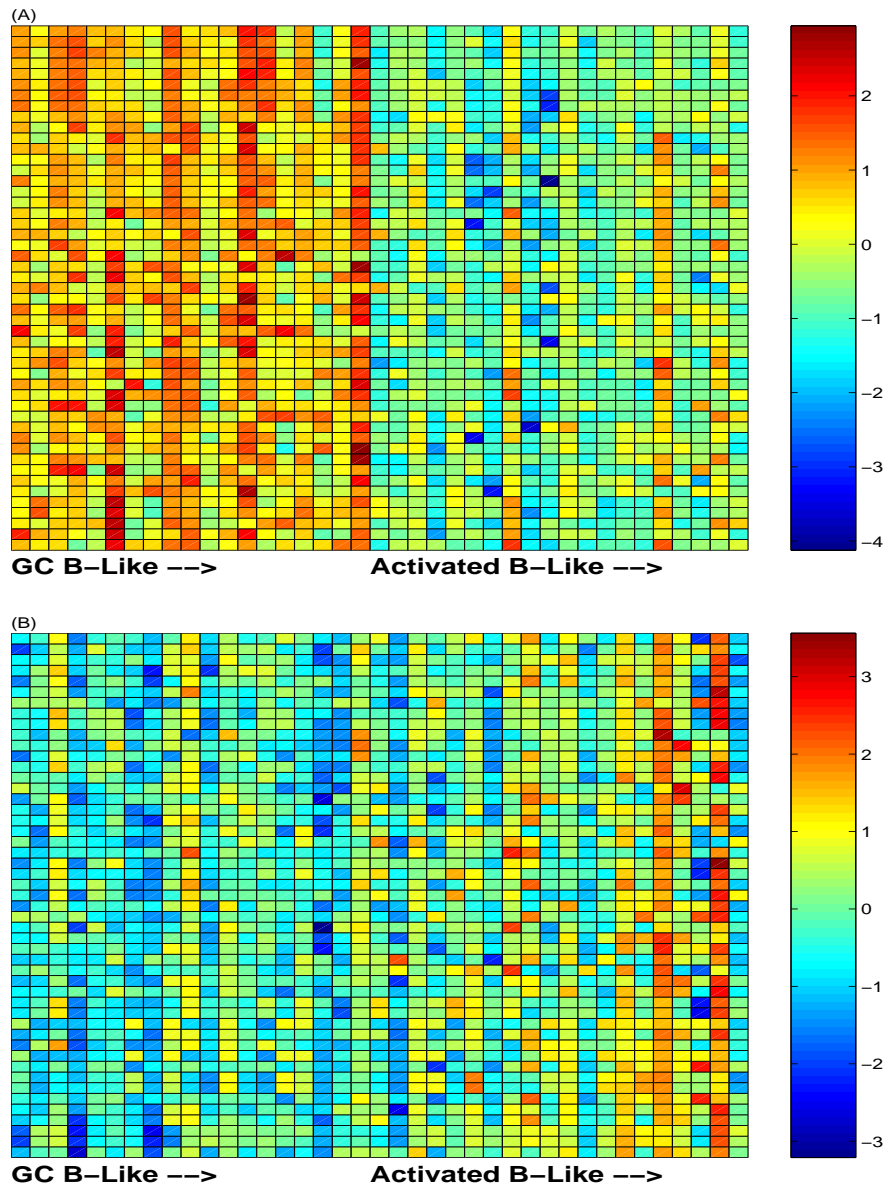


Figure 1: **DLBCL subtypes.** Displayed are the relative expression intensities of genes distinguishing DLBCL subgroups: GC B-like ($N = 19$) and Activated B-like samples (ranked) based on t-statistics. (A) Top 50 genes highly expressed in GC B-like relative to Activated B-like ($N = 21$) samples. (B) Top 50 genes highly expressed in Activated B-like relative to GC B-like samples. Relative expression values here are $\log(\text{Cy5}/\text{Cy3})$ values and Cy5 and Cy3 values are signal – background measurements. Expressions are standardized so that the mean is 0 and the standard deviation is 1.

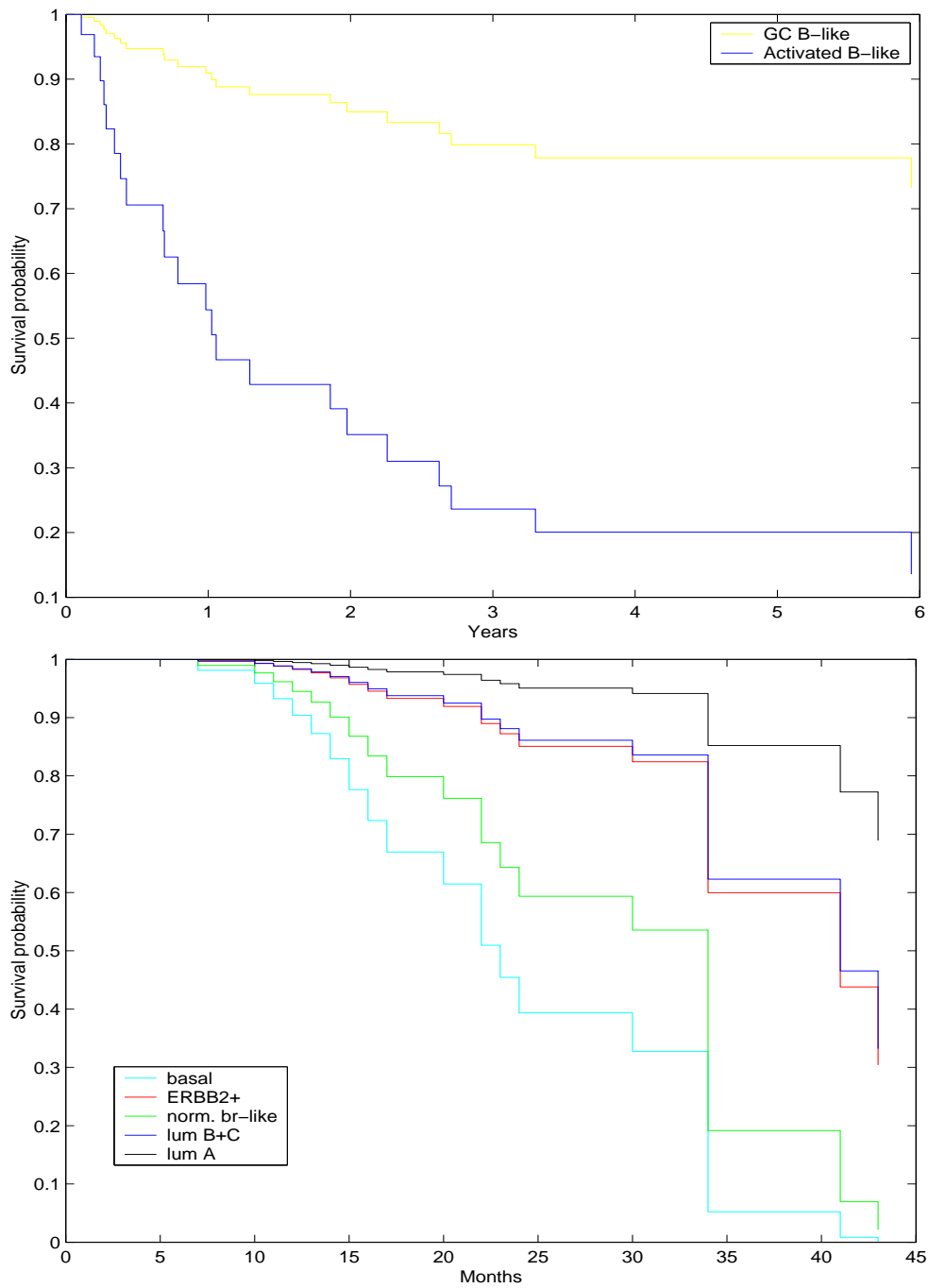


Figure 2: Given are estimated survival curves from the PLSPH regression model fits to the (top) diffuse large B-cell lymphoma data and (bottom) and the breast carcinomas cDNA gene expression data. The curves are obtained for the group-average component profiles. See figure legend for group definitions.

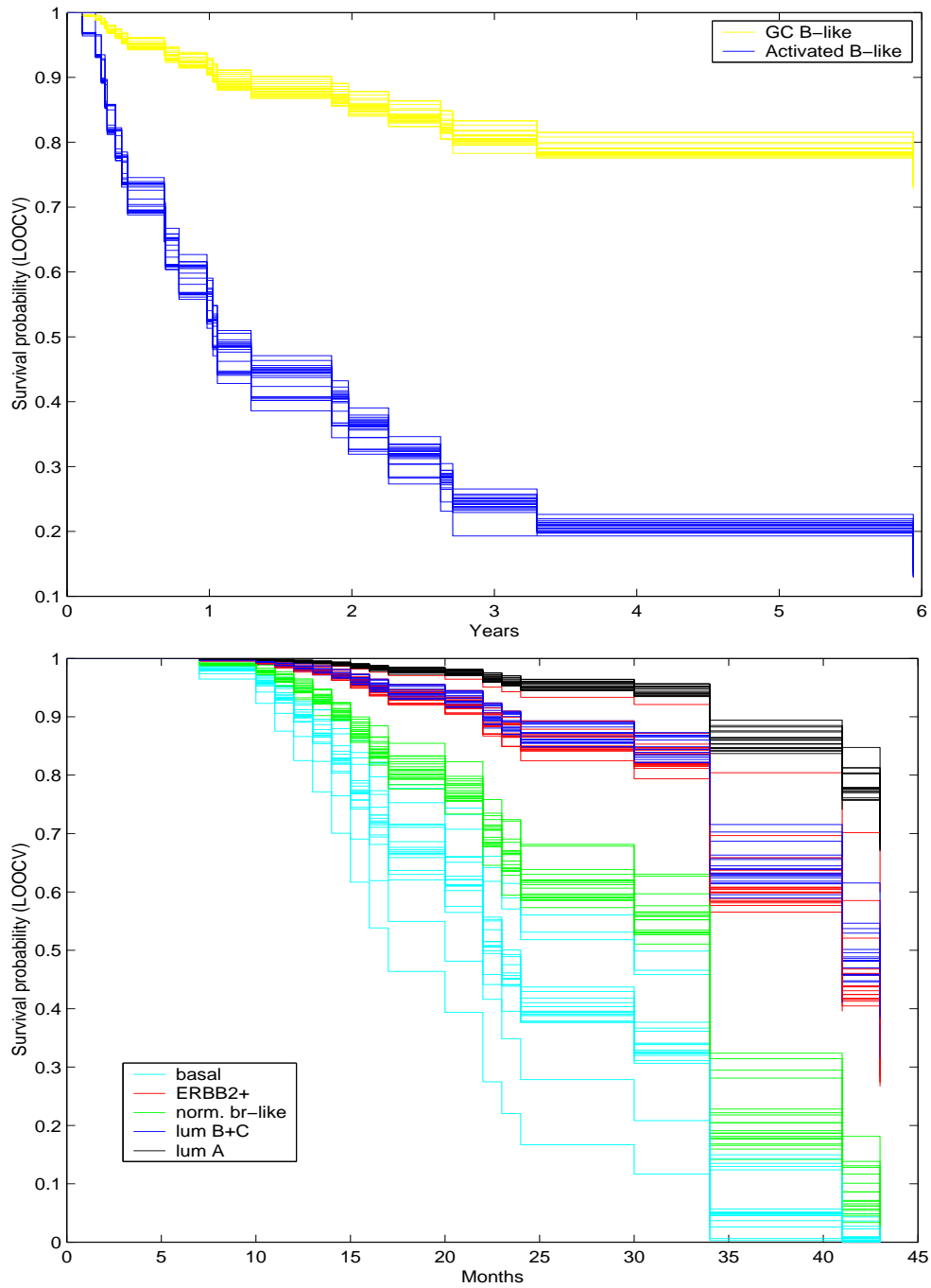


Figure 3: Given are cross-validated survival curve estimates from the PLSPH regression model fits to the (top) diffuse large B-cell lymphoma data and (bottom) and the breast carcinomas data. See text for details. As in Figure 2 the curves are obtained for the group-average component profiles.