

SUPPLEMENTAL FIGURES

Nguyen, D.V. and Rocke, D.M. (2003) On partial least squares dimension reduction for microarray-based classification: A simulation study.

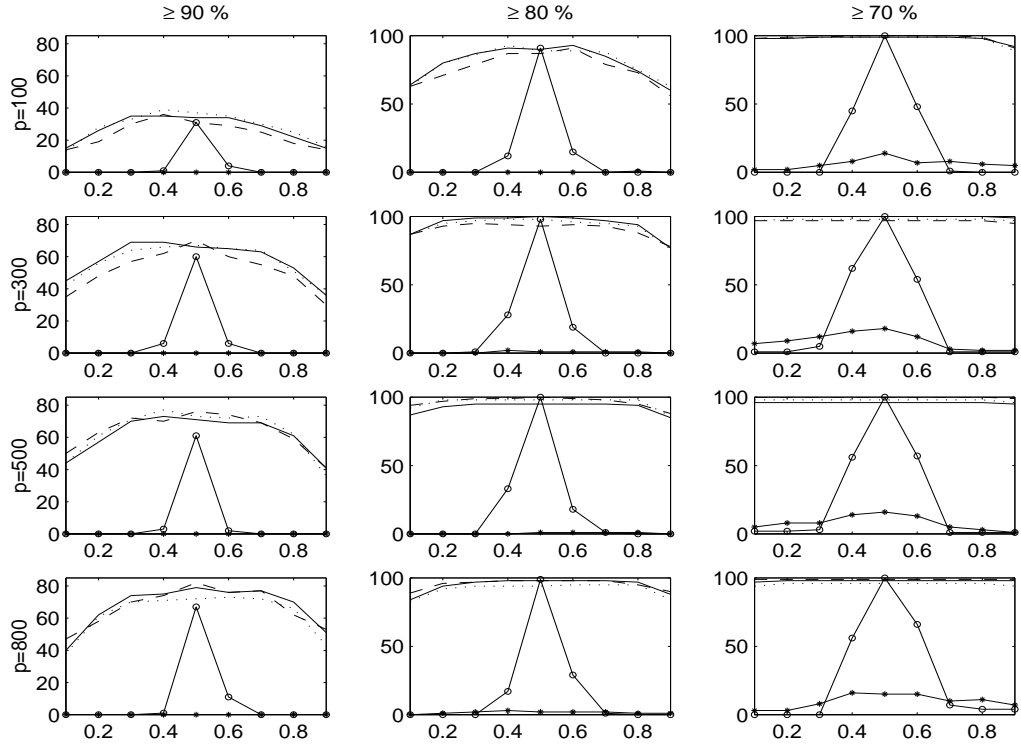


Figure 1: Percentage of correct classification for data sets generated with **32%** predictor variability explained. The y -axis of each plot is the percentage of data sets, out of 100, with correct classification $\geq 90\%$ (column 1), $\geq 80\%$ (column 2), and $\geq 70\%$ (column 3). Results are given as a function of the cutoff point c (x -axis) and for each dimension $p = 100, 300, 500$, and 800 . The methods are PCA-LD ($- * -$), PLS-LD ($—$), PLSM2-LD (\cdots), PLSM1-LD ($- - -$), PLS-OLS ($- \circ -$).

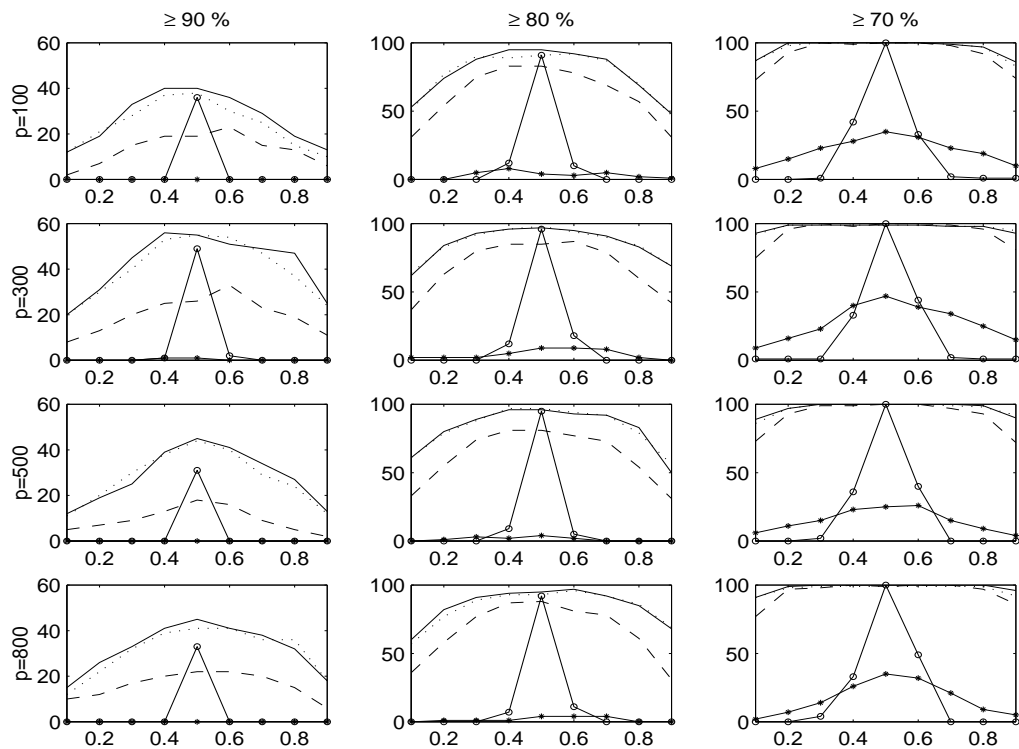


Figure 2: Percentage of correct classification for data sets generated with **50%** predictor variability explained. The methods are PCA-LD ($-* -$), PLS-LD ($—$), PLSM2-LD (\cdots), PLSM1-LD ($---$), pLS-OLS ($- \circ -$). See Figure 1 caption for details.

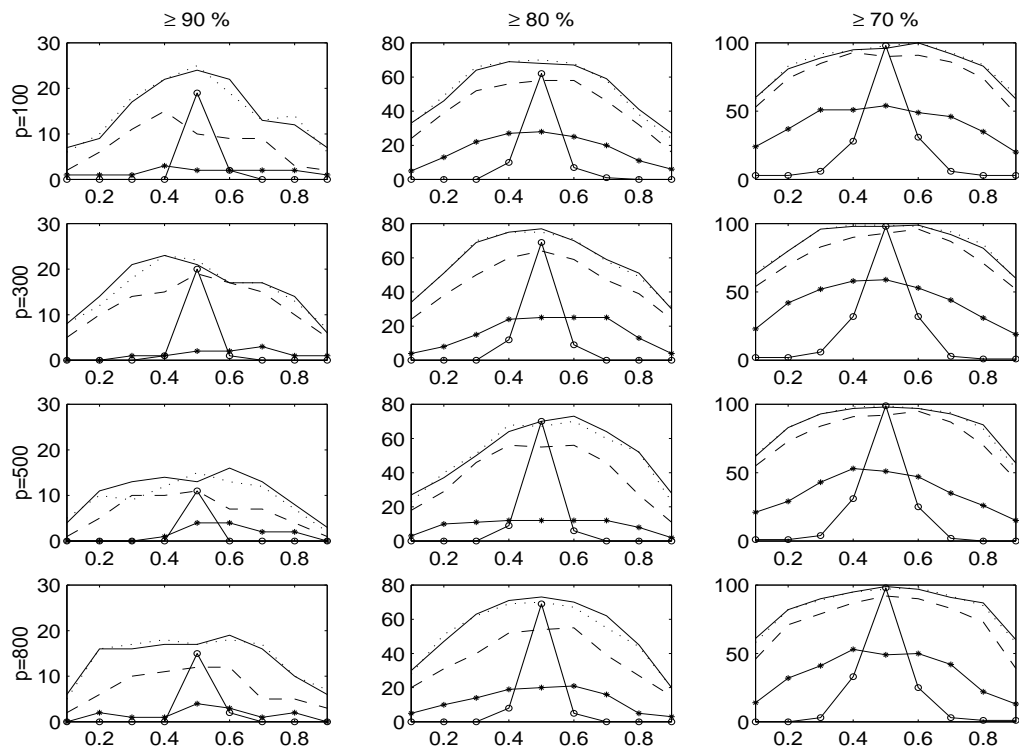


Figure 3: Percentage of correct classification for data sets generated with **72%** predictor variability explained. The methods are PCA-LD ($-*-$), PLS-LD ($---$), PLSM2-LD (\cdots), PLSM1-LD ($---$), PLS-OLS($-o-$). See Figure 1 caption for details.

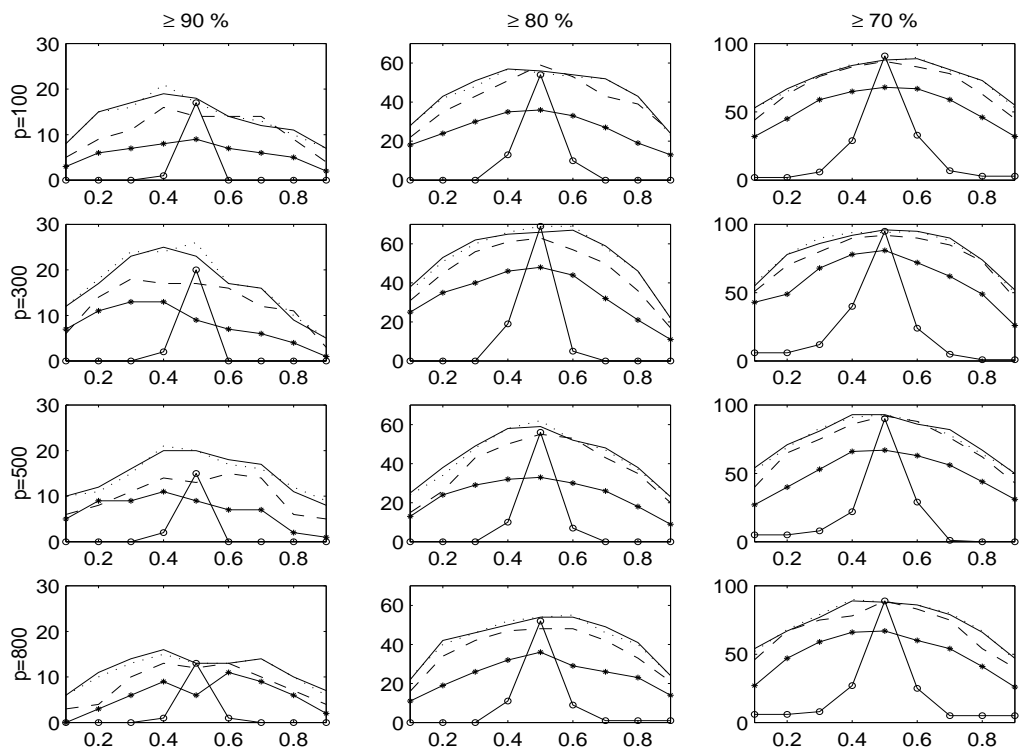


Figure 4: Percentage of correct classification for data sets generated with **90%** predictor variability explained. The methods are PC ($- * -$), PLS ($—$), PLSM2 (\cdots), PLSM1 ($- - -$), OLS($- \circ -$). See Figure 1 caption for details.

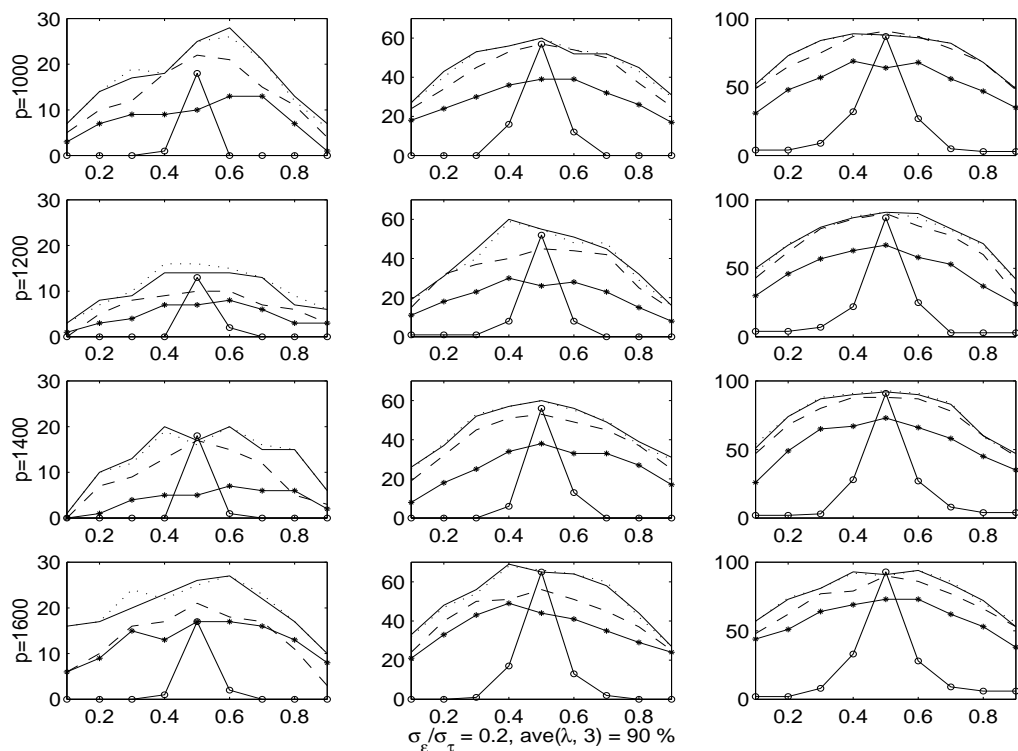


Figure 5: Percentage of correct classification for data sets generated with **90%** predictor variability explained. The methods are PC (—*—), PLS (—), PLSM2 (···), PLSM1 (---), OLS(—o—). See Figure 1 caption for details.